



SPRING 2015 FASHION JEWELRY COLOR GUIDE

Match the 2015 Pantone Spring Colors with your
fashion jewelry accessories.

Brought to you by

Long's[®]
Fine Jewelers Since 1878

Aquamarine

The lead color for women for the Spring/Summer 2015 season, PANTONE 14-4313 Aquamarine is an airy blue with a dreamy feel. Cool and calming, ethereal Aquamarine is a shade with a watery feel. Open and expansive, this restful blue also acts as a stress reducer.



Marco Bicego Rose Cut Cushion
Dark Acquamarine
(Retail \$2,670, AQP0057)

16.5"



White Gold Aqua Carbon Ring w/Diamonds
(Retail \$5,250, AQD0294)

Pairs Well With:

PANTONE 14-4102 Glacier Gray

PANTONE 18-1438 Marsala



Scuba Blue

An invigorating turquoise, PANTONE 16-4725 Scuba Blue conveys a sense of carefree playfulness. Even though a cool shade, the vibrancy of Scuba Blue adds a splash of excitement to the palette. Scuba Blue offers a feeling of escape as it is reminiscent of a tropical ocean. This stirring and energizing shade takes us off to an exotic paradise that is pleasant and inviting, even if only a fantasy.

Pairs Well With:

PANTONE 19-4052 Classic Blue

PANTONE 14-5714 Lucite Green



Opal Earrings with Diamonds
(Retail \$1,580, MSE0788)



Two Tone Gold Black Opal & Diamond Ring
(Our Price: \$3,850, ESRG3425)

Lucite Green

Generally not thought of as a fashion color, though it does come back from time to time, PANTONE 14-5714 Lucite Green is a soothing green shade whose time has really come again. Fresh and clarifying, cool and refreshing, Lucite Green has a minty glow. Light in weight and also in tone, Lucite Green seems almost transparent.



Granule Topped Groovy Green
Chickpea Earrings
(Retail \$350, MSE0934)



Gurhan One Of A Kind Green
Moonstone Ring
(Retail \$1,300, SSR2519)

Pairs Well With:

PANTONE 19-4052 Classic Blue

PANTONE 16-4725 Scuba Blue



Classic Blue

Reliable and thoughtful, PANTONE 19-4052 Classic Blue inspires calm, confidence and harmony. Serving as an anchor to the Spring/Summer 2015 palette, Classic Blue is a shade that is strong and reliable. Just as with the sea, because of its waterborne qualities, this Classic Blue is perceived as thoughtful and introspective.



Sapphire and Diamond Eternity Band
(Retail \$6,225, DETS0664)



Gurhan One Of A Kind Blue
Moonstone Ring
(Retail \$4,925, SSR2518)

Pairs Well With:

PANTONE 16-1328 Sandstone

PANTONE 18-1438 Marsala



Toasted Almond

Bringing balance to the coolness of the Spring/Summer 2015 color range is PANTONE 14-1213 Toasted Almond. A sun-tanned neutral, Toasted Almond offers comforting warmth and is indicative of a spontaneous spring, summer feeling. Timeless and versatile, Toasted Almond is an organic shade that speaks to authenticity and all that is natural.



John Hardy Bamboo Signet
Madeira Citrine Ring
(Retail \$700, CIT0451)



Gold Rolo Chain Bracelet with
Lobster Claw
(Retail \$4,900, LBF4091)

Pairs Well With:

PANTONE 16-3310
Lavender Herb



Strawberry Ice

Aptly named, PANTONE 16-1720 Strawberry Ice is suggestive of a cooling and refreshing delicacy, yet its warmth as a color is quite appealing. Subtle and charming, Strawberry Ice is an ideal shade for Spring/Summer 2015. Both tasty and tasteful, Strawberry Ice is a confection color that evokes a feeling of being “in the pink,” emitting a flattering and healthy glow.



Pink Sapphire Eternity Band
(Retail \$895, DETS0585)

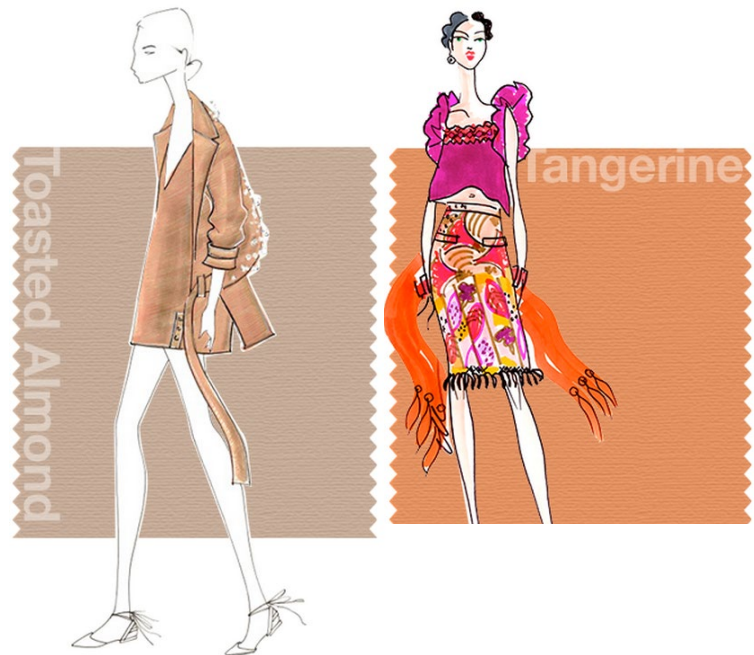


Carved Pink Opal Delicate Ball Chain
(Retail \$1,450, MSP0319)

Pairs Well With:

PANTONE 14-1213 Toasted Almond

PANTONE 15-1247 Tangerine



Tangerine

Spontaneous and gregarious, PANTONE 15-1247 Tangerine is a juicy orange shade that is energizing, yet not jarring to the eye. Versatile Tangerine is striking enough to stand on its own and adds vitality to a printed pattern. Good natured and friendly, but with a tangy edge, this fun-loving color invites a smile.

Pairs Well With:

PANTONE 14-1213 Toasted Almond

PANTONE 16-1720 Strawberry Ice



Rolex Milgauss Oyster 40mm Steel Watch
(Retail \$7,650, GBW3638)



Shinola Runwell Orange Watch
(Retail \$600, LSW1003)

Custard

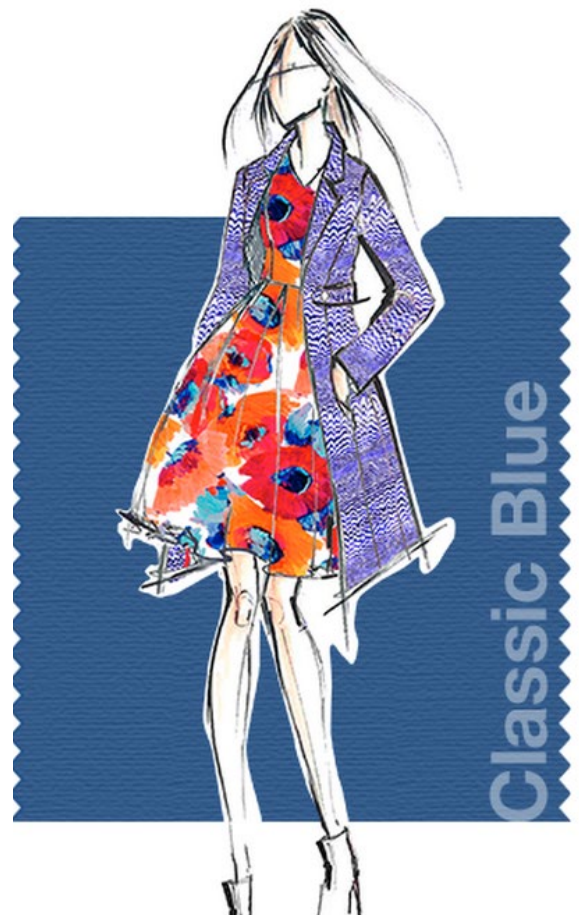
Just as the name implies, PANTONE 13-0720 Custard is a delicious and delectable yellow. Sweet and sunny, Custard is a cheering tone that brings thoughts of pleasant relaxation and comfort food. Engaging with its soft and mellow warmth and full of good feelings, subtle Custard has an affable and easy disposition.

Pairs Well With:

PANTONE 19-4052 Classic Blue



Chan Luu Yellow Mix Henna Bracelet
(Retail \$200, LSB0079)



Marsala

Interesting on its own and a wonderful contrast for other hues, PANTONE 18-1438 Marsala serves as the foundation to the Spring/Summer 2015 palette. Sensual and bold, delicious Marsala is a daringly inviting tone that nurtures; exuding confidence and stability while feeding the body, mind and soul. Much like the fortified wine that gives Marsala its name, this robust shade incorporates the warmth and richness of a tastefully fulfilling meal, while its grounding red-brown roots point to a sophisticated, natural earthiness.



Marco Bicego Paradise Multi Row Bracelet
(Retail \$8,470, MSB0205)

16.5"



Heather Moore "Love You With Me"
Bar Chain Bracelet
(Retail \$360, LBF4099)

Pairs Well With:

PANTONE 19-4052 Classic Blue

PANTONE 16-1328 Sandstone



Glacier Gray

More dominant for men than women in Spring/Summer 2015, PANTONE 14-4102 Glacier Gray is an unobtrusive gray that contrasts and enhances; bouncing off other shades without taking away from them as it slips into the background to allow other colors to take center stage. Nature's most perfect neutral, Glacier Gray is a shade that is timeless. Quietly assuring and peacefully relaxing, Glacier Gray, is above all, constant.



Gold & Labrodorite Bead Bracelet
(Retail \$300, MSB0159)

Pairs Well With:

PANTONE 16-3310 Lavender Herb

PANTONE 18-0538 Woodbine



John Hardy Chain Bracelet with Pave Clasp
(Retail \$2,495, SSB1098)

SEE SOMETHING YOU LIKED?

You can stay current with your wardrobe and jewelry this Spring 2015 by following these color trends.

Go ahead and treat yourself!

Visit a Long's store to see any of the featured jewelry or browse our extensive collection of fashion jewelry pieces. We have plenty of pieces in all of the top colors for the spring.

Start your adventure now:

**MAKE AN APPOINTMENT WITH A
LONG'S JEWELRY CONSULTANT**